

MINI FACT BOOK 2017



**Georgia
Tech**



CREATING THE NEXT



Georgia Institute of Technology

2017 Mini Fact Book



Office of Institutional Research and Planning

Georgia Institute of Technology

Atlanta, Georgia 30332-0530

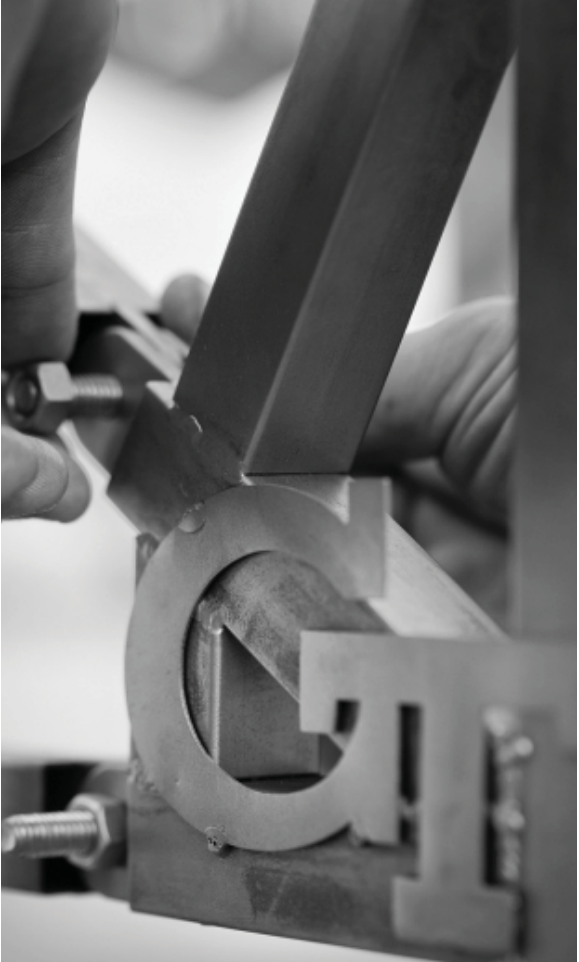
Phone: (404) 894-3311

Fax: (404) 894-0032

www.irp.gatech.edu

Cover and interior photos courtesy of
Georgia Tech Institute Communications

Georgia Tech is an equal employment/education opportunity institution.



A Unit of the University System of Georgia

©Copyright 2018

Quantity 1,800

TABLE OF CONTENTS

| | |
|--|-------|
| Vision/Mission Statements..... | 4 |
| Accreditation..... | 5 |
| National Rankings..... | 6 |
| Georgia Tech Leadership | 7 |
| Admissions ¹ , Financial Aid..... | 8 |
| Cost of Attendance | 9 |
| Retention and Graduation Rates | 10 |
| Enrollment ¹ | 10-13 |
| Degrees Offered | 14-16 |
| Degrees Conferred | 17 |
| Alumni | 18 |
| Career Discovery & Development and Study Abroad..... | 19 |
| Housing, Library, Space..... | 20 |
| Institute Finances | 21 |
| Research..... | 22 |
| Enterprise Innovation Institute..... | 23 |
| Faculty and Staff Profiles ¹ | 24 |

¹Fall 2017 term data is as of the end of term.

Vision

Georgia Tech will define the technological research university of the twenty-first century. As a result, we will be leaders in influencing major technological, social, and policy decisions that address critical global challenges. "What does Georgia Tech think?" will be a common question in research, business, the media, and government.

Mission

Technological change is fundamental to the advancement of the human condition. The Georgia Tech community—students, staff, faculty, and alumni—will realize our motto of "Progress and Service" through effectiveness and innovation in teaching and learning, our research advances, and entrepreneurship in all sectors of society. We will be leaders in improving the human condition in Georgia, the United States, and around the globe.



ACCREDITATION

The Georgia Institute of Technology is accredited by the Southern Association of Colleges and Schools Commission on Colleges to award baccalaureate, masters, and doctoral degrees. Contact the Southern Association of Colleges and Schools Commission on Colleges at:

Southern Association of Colleges and Schools
Commission on Colleges
1866 Southern Lane
Decatur, Georgia 30033-4097
Telephone number 404-679-4500
www.sacscoc.org

for questions about the accreditation of the Georgia Institute of Technology. In addition, many Institute programs are specifically accredited by appropriate professional certifying agencies.

Georgia Tech Counseling Center

American Psychology Association (APA)
International Association of Counseling Services (IACS)

Georgia Tech Police Department

Commission on Accreditation for Law Enforcement Agencies (CALEA)

• Professional Accreditations:

College of Design

American Council for Construction Education
National Architectural Accrediting Board
International Facility Management Association (IFMA) Foundation
Planning Accreditation Board
National Association of Schools in Art and Design

College of Computing

Computing Accreditation Commission of ABET

College of Engineering

Commission on Accreditation of Medical Physics Educational Programs
Engineering Accreditation Commission of ABET

College of Sciences

American Chemical Society
Commission on Accreditation of Allied Health Education Programs
Human Factors and Ergonomics Society
National Commission on Orthotic and Prosthetic Education

Scheller College of Business

Association to Advance Collegiate Schools of Business International

NATIONAL RANKINGS

Georgia Tech's undergraduate program received a ranking of 7th among public universities and 34th overall according to the 2018 edition of *U.S. News & World Report*.

Georgia Tech's College of Engineering ranked 7th among the top graduate schools in the nation according to the 2018 edition of *U.S. News & World Report*.

Georgia Tech's Scheller College of Business received a ranking of 29th overall among graduate business schools in the 2018 edition of *U.S. News & World Report*.

Specific top ten graduate program rankings in the 2018 edition of *U.S. News & World Report* include:

- 1st in Industrial/Manufacturing/Systems Engineering
- 2nd in Aerospace/Aeronautical/Astronautical Engineering
- 2nd in Civil Engineering
- 3rd in Bioengineering/Biomedical Engineering
- 5th in Computer Engineering
- 6th in Chemical Engineering
- 6th in Electrical/Electronic/Communications Engineering
- 6th in Mechanical Engineering
- 7th in Environmental/Environmental Health Engineering
- 8th in Materials Engineering
- 8th in Production/Operations
- 9th in Computer Science (2015)
- 9th in Nuclear Engineering
- 10th in Information Systems



GEORGIA TECH LEADERSHIP

(* denotes President's Cabinet)

| | |
|--|-----------------------|
| President * | G. P. "Bud" Peterson |
| Provost and Executive Vice President for Academic Affairs * | Rafael L. Bras |
| Executive Vice President for Administration and Finance * | Steven G. Swant |
| Executive Vice President for Research * | Stephen E. Cross |
| Vice President for Development * | Barrett H. Carson |
| Vice Provost for Graduate Education & Faculty Development * | Bonnie Ferri |
| Assistant Vice President/Chief of Staff * | Lynn M. Durham |
| Vice President for Institute Diversity * | Archie W. Ervin |
| Vice President, Legal Affairs and Risk Management * | Patrick McKenna |
| Vice Provost for Undergraduate Education * | Colin Potts |
| Vice President of Student Life/Dean of Students * | John M. Stein |
| Vice President, Government and Community Relations * | Dene H. Sheheane |
| Vice President, Institute Communications* | Michael Warden |
| Vice President and Executive Director, Enterprise Innovation Institute | Christopher Downing |
| Dean, Professional Education | Nelson C. Baker |
| Dean, College of Design | Steven P. French |
| Dean, College of Computing | Zvi Galil |
| Dean, College of Engineering | Steven McLaughlin |
| Dean, Ivan Allen College of Liberal Arts | Jacqueline J. Royster |
| Dean, Scheller College of Business | Maryam Alavi |
| Dean, College of Sciences | Paul Goldbart |
| Dean, Libraries | Catherine Murray-Rust |
| Senior Vice President and Director, GTRI | Andrew Gerber |
| Senior Vice President for Administration and Finance | Vacant |
| Vice Provost, Enrollment Services | Paul Kohn |
| Vice Provost for International Initiatives | Yves Berthelot |
| Director of the Athletic Association | Todd Stansbury |
| President and Chief Executive Officer, Georgia Tech Alumni Association | Joseph P. Irwin |
| President, Georgia Tech Foundation | Al Trujillo |

ADMISSIONS

Admissions, Fall 2017

| | Applied | Accepted | Enrolled |
|----------|---------|----------|----------|
| Freshman | 31,054 | 6,922 | 2,567 |
| Transfer | 1,916 | 722 | 635 |
| Graduate | 17,543 | 6,147 | 3,533 |



Cumulative Average Test Scores* for Fall 2017 Freshman Cohort:

| | Verbal | Math | Composite |
|-----|--------|------|-----------|
| SAT | 693 | 720 | 1412 |
| ACT | 32 | 31 | 32 |

*Prior year Fact Books reported the average for re-centered SAT scores which included converted ACT scores for those students who opted to take the ACT instead of the SAT.



FINANCIAL AID

Georgia Tech Awarded Student Aid, FY 2016-2017

| | Number of Awards | Amount of Awards |
|----------------------------------|------------------|----------------------|
| Federal Funds | 13,597 | \$95,541,091 |
| State Funds | 8,030 | 58,435,304 |
| Institutional Scholarships/Loans | 5,532 | 49,641,602 |
| Total GT Awarded Aid | 27,159 | \$203,617,997 |
| Total Outside Awards | 2,207 | \$15,698,498 |
| Total Awards | 29,366 | \$219,316,495 |

COST OF ATTENDANCE

Tuition and Fees, FY 2018

| | Resident | Non-Resident |
|---------------|----------|--------------|
| Undergraduate | \$12,418 | \$33,014 |
| Graduate | \$15,798 | \$30,578 |
| MBA Program | \$31,242 | \$42,190 |

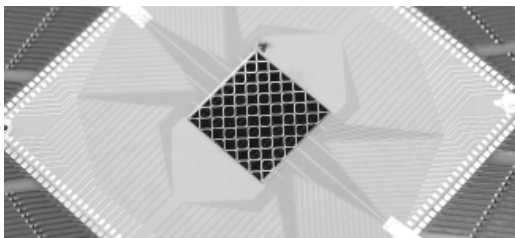
Breakdown of Other Mandatory Fees (included in above) for undergraduate Georgia Residents:

| | |
|-------------------------------|-----------------|
| Recreation-Facility | \$ 108 |
| Student Activities | 246 |
| Student Athletic | 254 |
| Student Health | 330 |
| Transportation | 170 |
| Technology | 214 |
| USG Special Institutional Fee | 1,088 |
| Total | \$ 2,410 |

Estimated Elective Charges:

| | |
|---|----------|
| Dormitory Room Rent | \$ 6,652 |
| Board | 4,840 |
| Miscellaneous (books, supplies, personal) | 4,000 |
| Average Loan Costs | 60 |

Total Resident Freshman Costs: \$ 27,970



RETENTION RATES

Retention Rates for Entering Freshmen

| Entering Class Summer/Fall | Retained After 1 year | Retained After 2 years |
|-------------------------------|--------------------------|---------------------------|
| 2008 | 93% | 88% |
| 2009 | 94% | 90% |
| 2010 | 95% | 92% |
| 2011 | 95% | 91% |
| 2012 | 96% | 92% |
| 2013 | 96% | 94% |
| 2014 | 97% | 94% |
| 2015 | 97% | 95% |
| 2016 | 97% | |

*Note: Cohorts include students beginning Summer or Fall who are full-time for Fall. Retention is defined as being enrolled or having graduated.

GRADUATION RATES

Graduation Rates for Entering Freshmen

| Entering Class Summer/Fall | Graduated by | | |
|-------------------------------|--------------|----------|----------|
| | 4th year | 5th year | 6th year |
| 2010 | 41% | 80% | 86% |
| 2011 | 39% | 80% | 85% |
| 2012 | 40% | 82% | |
| 2013 | 46% | | |

*Note: The six year graduation rate is the official rate according to the IPEDS Graduation Rate Survey definition. Cohorts include students beginning Summer or Fall who are full-time for Fall.



ENROLLMENT

Undergraduate Enrollment by Residency - Fall 2017

| | Total | Pct |
|--------------------|---------------|-------------|
| ■ Georgia Resident | 9,589 | 62% |
| ■ Non-Resident | 5,982 | 38% |
| Total | 15,571 | 100% |



ENROLLMENT

Enrollment Diversity - Fall Semester 2017

| | Undergraduate | Graduate | Total | Percent |
|-----------------------|---------------|---------------|---------------|----------------|
| Amer. Indian/Alaskan | * | 8 | 12 | 0.04% |
| Asian | 3,258 | 1,778 | 5,036 | 17.15% |
| Black/African Amer. | 1,084 | 544 | 1,628 | 5.54% |
| Hawaiian/Pacific Isl. | * | 5 | 12 | 0.04% |
| Hispanic/Latino | 1,032 | 646 | 1,678 | 5.71% |
| International | 1,405 | 5,194 | 6,599 | 22.47% |
| Two or More Races | 583 | 275 | 858 | 2.92% |
| Unknown | 592 | 5 | 576 | 2.03% |
| White | 7,606 | 5,343 | 12,949 | 44.09% |
| Total | 15,571 | 13,798 | 29,369 | 100.00% |

Note: Includes International (Non U.S. Resident) Students. Some data redacted due to FERPA (Undergraduate < 10, Graduate < 5).

| | | | | |
|--------------|---------------|---------------|---------------|----------------|
| Male | 9,657 | 10,636 | 20,293 | 69.10% |
| Female | 5,914 | 3,162 | 9,076 | 30.90% |
| Total | 15,571 | 13,798 | 29,369 | 100.00% |



Enrollment by Class - Fall Semester 2017

| | |
|----------------------------|---------------|
| Freshman | 2,239 |
| Sophomore | 3,108 |
| Junior | 3,700 |
| Senior | 5,762 |
| JEPHS** | 527 |
| Special Undergraduate | 235 |
| Total Undergraduate | 15,571 |
| Master's | 10,286 |
| Ph.D. | 3,444 |
| Special Graduate | 68 |
| Total Graduate | 13,798 |
| Total Institute | 29,369 |

** JEPHS = Joint Enrollment Program for High School Students

ENROLLMENT

Enrollment by State of Residence - Top 20, Fall Semester 2017

| State | Undergraduate | Graduate | Total |
|----------------|---------------|--------------|---------------|
| Georgia | 9,589 | 2,953 | 12,542 |
| California | 270 | 849 | 1,119 |
| Florida | 582 | 413 | 995 |
| Texas | 269 | 456 | 725 |
| New York | 259 | 356 | 615 |
| Virginia | 256 | 296 | 552 |
| New Jersey | 318 | 232 | 550 |
| North Carolina | 271 | 176 | 447 |
| Pennsylvania | 246 | 164 | 410 |
| Maryland | 218 | 160 | 378 |
| Massachusetts | 175 | 188 | 363 |
| Illinois | 175 | 186 | 361 |
| Tennessee | 163 | 130 | 293 |
| Washington | 53 | 195 | 248 |
| Ohio | 118 | 120 | 238 |
| South Carolina | 105 | 114 | 219 |
| Alabama | 81 | 129 | 210 |
| Connecticut | 99 | 57 | 156 |
| Michigan | 32 | 109 | 141 |
| Louisiana | 43 | 40 | 83 |

Enrollment by Country of Residence - Top 20, Fall Semester 2017

| Country | Undergraduate | Graduate | Total |
|----------------------------|---------------|----------|-------|
| China | 296 | 1,820 | 2,116 |
| India | 202 | 1,458 | 1,660 |
| Korea, Republic of (South) | 236 | 287 | 523 |
| France | 8 | 153 | 161 |
| Canada | 8 | 147 | 155 |
| Iran | 6 | 109 | 115 |
| Taiwan | 8 | 97 | 105 |
| Turkey | 29 | 61 | 90 |
| Brazil | 48 | 36 | 84 |
| Pakistan | 7 | 66 | 73 |
| Mexico | 18 | 49 | 67 |
| Nigeria | 33 | 30 | 63 |
| Colombia | 20 | 42 | 62 |
| Singapore | 17 | 33 | 50 |
| Vietnam | 21 | 28 | 49 |
| United Kingdom | 22 | 23 | 45 |
| Indonesia | 21 | 21 | 42 |
| Germany | 8 | 31 | 39 |
| Thailand | 15 | 14 | 29 |
| Japan | 14 | 13 | 27 |

- Students at Georgia Tech represent 127 different countries.
- Total student population with country of residence not in U.S. is 6,599

ENROLLMENT

Enrollment by College, 10 Year History

| College | 2007 | 2017 |
|---|---------------|---------------|
| College of Computing | | |
| Bachelor's (or Undergraduate) | 842 | 2,199 |
| Master's | 464 | 6,447 |
| Doctorate | 281 | 329 |
| Total College of Computing | 1,587 | 8,975 |
| College of Design | | |
| Bachelor's (or Undergraduate) | 758 | 411 |
| Master's | 373 | 466 |
| Doctorate | 78 | 80 |
| Total College of Design | 1,209 | 957 |
| College of Engineering | | |
| Bachelor's (or Undergraduate) | 7,346 | 8,891 |
| Master's | 1,701 | 2,243 |
| Doctorate | 1,857 | 2,166 |
| Total College of Engineering | 10,904 | 13,300 |
| Ivan Allen College of Liberal Arts | | |
| Bachelor's (or Undergraduate) | 894 | 678 |
| Master's | 184 | 133 |
| Doctorate | 100 | 101 |
| Total Ivan Allen College | 1,178 | 912 |
| Scheller College of Business | | |
| Bachelor's (or Undergraduate) | 1,304 | 1,216 |
| Master's | 320 | 840 |
| Doctorate | 43 | 51 |
| Total Scheller College of Business | 1,510 | 2,079 |
| College of Sciences | | |
| Bachelor's (or Undergraduate) | 1,180 | 1,413 |
| Master's | 138 | 205 |
| Doctorate | 641 | 717 |
| Total College of Sciences | 1,959 | 2,335 |
| No College Declared | | |
| Bachelor's (or Undergraduate) | 249 | 763 |
| Master's | -- | 20 |
| Total No College Declared | 249 | 783 |
| Institute Total | 18,753 | 29,369 |

DEGREES OFFERED

•College of Computing•

Bachelor's

Computational Media
Computer Science

Master's

Analytics
Bioengineering
Computational Science & Engr.
Computer Science
Cybersecurity
Human-Computer Interaction

Ph.D.

Algorithms, Combinatorics &
Optimization
Bioengineering
Bioinformatics
Computational Science & Engr.
Computer Science
Human-Centered Computing
Robotics

•College of Design•

Bachelor's

Architecture
Industrial Design
Music Technology

Master's

Architecture
Architecture & City and Regional
Planning
Building Construction & Facility
Management
City & Regional Planning
City & Regional Planning &
Civil Engineering
City & Regional Planning & Law
City & Regional Planning &
Public Policy
Geographic Information Science
& Technology
Human-Computer Interaction
Industrial Design

Music Technology
Real Estate Development
Urban Design

Ph.D.

Architecture
Building Construction
City & Regional Planning
Music Technology

•College of Engineering•

Bachelor's

Aerospace Engineering
Biomedical Engineering
Chemical & Biomolecular Engr.
Civil Engineering
Computer Engineering
Electrical Engineering
Environmental Engineering
Industrial Engineering
Materials Science & Engr.
Mechanical Engineering
Nuclear & Radiological Engr.

Master's

Aerospace Engineering
Analytics
Applied Systems Engineering
(Professional)
Bioengineering
Biomedical Innovation &
Development
Chemical & Biomolecular Engr.
Chemical Engineering
Civil Engineering
Computational Science & Engr.
Cybersecurity
Electrical & Computer Engr.
Engineering Sci. & Mechanics
Environmental Engineering
Health Systems
Industrial Engineering
International Logistics
Materials Science & Engr.

DEGREES OFFERED

Mechanical Engineering
 Medical Physics
 Nuclear Engineering
 Operations Research
 Paper Science & Engineering
 Quantitative & Computational
 Finance
 Statistics
 Supply Chain Engineering

Ph.D.

Aerospace Engineering
 Algorithms, Combinatorics &
 Optimization
 Bioengineering
 Bioinformatics
 Biomedical Engineering
 Chemical Engineering
 Civil Engineering
 Electrical & Computer Engr.
 Industrial Engineering
 Materials Science & Engr.
 Mechanical Engineering
 Nuclear Engineering
 Ocean Science and Engineering
 Operations Research
 Paper Science & Engineering
 Robotics

•Scheller College of Business•

Bachelor's

Business Administration

Master's

Analytics
 Business Administration
 Global Business
 Management
 Management of Technology
 Quantitative & Computational
 Finance

Ph.D.

Management

•Ivan Allen College of Liberal Arts•

Bachelor's

Applied Languages &
 Intercultural Studies
 Computational Media
 Computational Media &
 Digital Media
 Economics
 Economics & International
 Affairs
 Global Economics & Modern
 Languages
 History, Technology, & Society
 International Affairs
 International Affairs & Modern
 Languages
 Literature, Media, &
 Communication
 Literature, Media, and
 Communication & Digital
 Media
 Public Policy

Master's

Cybersecurity
 Digital Media
 Economics
 History & Sociology of
 Technology & Science
 Human-Computer Interaction
 International Affairs
 Public Policy

Ph.D.

Digital Media
 Economics
 History & Sociology of
 Technology & Science
 International Affairs, Science
 & Technology
 Public Policy

DEGREES OFFERED

•College of Sciences•

Bachelor's

Applied Physics
Biochemistry
Biology
Chemistry
Discrete Mathematics
Earth & Atmospheric Sciences
Mathematics
Neuroscience
Physics
Psychology

Master's

Bioinformatics
Biology
Chemistry
Computational Science & Engr.
Earth & Atmospheric Sciences
Human-Computer Interaction
Mathematics
Paper Science & Engineering

Physics
Prosthetics & Orthotics
Psychology
Quantitative & Computational
Finance
Statistics

Ph.D.

Algorithms, Combinatorics,
& Optimization
Applied Physiology
Bioinformatics
Biology
Chemistry
Earth & Atmospheric Sciences
Mathematics
Ocean Science and Engineering
Paper Science & Engineering
Physics
Psychology
Quantitative BioSciences



DEGREES CONFERRED

Degrees Conferred by College, 10 Year History

Bachelor's

| College | 2007 | 2017 |
|------------------------------------|--------------|--------------|
| College of Computing | 206 | 477 |
| College of Design | 156 | 69 |
| College of Engineering | 1,474 | 2,343 |
| Ivan Allen College of Liberal Arts | 167 | 130 |
| Scheller College of Business | 330 | 370 |
| College of Sciences | 210 | 219 |
| Total | 2,543 | 3,608 |

Master's

| College | 2007 | 2017 |
|------------------------------------|--------------|--------------|
| College of Computing | 142 | 707 |
| College of Design | 108 | 173 |
| College of Engineering | 747 | 1,083 |
| Ivan Allen College of Liberal Arts | 65 | 80 |
| Scheller College of Business | 117 | 338 |
| College of Sciences | 123 | 143 |
| Total | 1,302 | 2,524 |

Ph.D.

| College | 2007 | 2017 |
|------------------------------------|------------|------------|
| College of Computing | 30 | 34 |
| College of Design | 7 | 17 |
| College of Engineering | 336 | 358 |
| Ivan Allen College of Liberal Arts | 6 | 21 |
| Scheller College of Business | 8 | 4 |
| College of Sciences | 72 | 74 |
| Total | 459 | 508 |

Institute

| | 2007 | 2017 |
|------------------------|--------------|--------------|
| Institute Total | 4,304 | 6,640 |

ALUMNI

Top Countries of Residence

| | |
|--------------------------|---------|
| United States of America | 141,220 |
| India | 1,457 |
| China | 1,429 |
| France | 1,275 |
| South Korea | 723 |
| Germany | 409 |
| Taiwan | 274 |
| Canada | 266 |
| Singapore | 236 |
| United Kingdom | 182 |



Top States of Residence

| | |
|----------------|--------|
| Georgia | 65,602 |
| Florida | 9,606 |
| California | 8,754 |
| Texas | 7,066 |
| North Carolina | 5,011 |
| Virginia | 4,613 |
| South Carolina | 3,831 |
| Tennessee | 3,275 |
| Alabama | 2,963 |
| Maryland | 2,577 |



Top Employers

| | |
|--------------------------|-------|
| IBM Corporation | 1,006 |
| Delta Air Lines, Inc. | 965 |
| Southern Company | 954 |
| Lockheed Martin | 908 |
| AT&T Inc. | 894 |
| General Electric Company | 688 |
| The Coca-Cola Company | 470 |
| Boeing Company | 435 |
| Cisco Systems, Inc. | 428 |
| Intel Corporation | 425 |

CAREER DISCOVERY & DEVELOPMENT

Top Interviewing Companies, Fiscal Year 2017

| | |
|-------------|----------------------|
| Microsoft | Manhattan Associates |
| Bloomberg | SunTrust Bank |
| ExxonMobil | Accenture |
| Capital One | Ernst & Young |

Average Reported Starting Annual Salaries by College, Academic Year 2016-2017

| College | Bachelor's |
|-------------|------------|
| Computing | \$85,000 |
| Design | \$45,000 |
| Engineering | \$68,000 |
| Ivan Allen | \$52,000 |
| Business | \$61,500 |
| Sciences | \$54,000 |

EXPERIENTIAL LEARNING PROGRAMS, FY 2016-2017

Participants FY 2016-17

| | |
|-----------------------------------|-------|
| Undergraduate Cooperative Program | 1,537 |
| Professional Internship Program | 1,150 |
| Graduate Cooperative Program | 1,061 |
| Co-op Degrees Earned | 482 |

INTERNATIONAL EDUCATION

Georgia Tech Students Abroad by Year 2014-2015 through 2016-2017*

| Year | Number |
|-----------|--------|
| 2014-2015 | 1,967 |
| 2015-2016 | 2,111 |
| 2016-2017 | 2,215 |

*Year is equal to Fall term to Summer term of the following year.

HOUSING

Student Housing Occupancy, Fall 2017:

| | |
|------------------------------|---------------|
| Total Single Student Housing | |
| Capacity | 9,848 |
| Occupancy | 9,793 |
| Married Student Housing | |
| Capacity | 222 |
| Occupancy | 222 |
| Total Student Housing | |
| Capacity | 10,070 |
| Occupancy | 10,015 |
| Percent Occupied | 99.45% |

LIBRARY

The Georgia Tech Library Collections & Usage for Fiscal Year 2017:

| | |
|---|-----------|
| Number of Titles | 1,971,250 |
| Items Circulated | 40,424 |
| SmartTech Holdings | 53,368 |
| SmartTech Unique Users | 510,492 |
| Electronic Books | 1,018,900 |
| Electronic Journals | 29,621 |
| Articles and Books Downloaded (estimated) | 2,735,386 |
| Classes taught by Library Faculty & Staff | 320 |
| Library Attendance | 1,433,263 |

SPACE

Square Footage by Functional Area, Fall 2017:

| Area | Gross Square Footage |
|-----------------------------------|----------------------|
| Academic Instruction and Research | 5,659,795 |
| Academic Support | 483,890 |
| Athletic Association | 911,424 |
| Campus Support | 878,902 |
| GT Research Institute | 1,007,277 |
| Other | 186,795 |
| Parking Decks | 2,227,201 |
| Residential | 3,322,045 |
| Student Support | 734,732 |
| Institute Total | 15,412,061 |

- Georgia Tech has 249 buildings

INSTITUTE FINANCES

Revenues - FY 2017 Actual

| | |
|-----------------------------|------------------------|
| State Appropriations | \$267,514,001 |
| Student Tuition and Fees | 361,845,835 |
| Gifts, Grants and Contracts | 808,561,596 |
| Sales, Services & Other | 182,747,003 |
| Total Revenue | \$1,620,668,435 |



Expenditures by Major Program Areas FY 2017 Actual

Major Program Areas:

| | |
|------------------------------|------------------------|
| Instruction | \$302,825,848 |
| Research | 733,414,901 |
| Public Service | 64,024,758 |
| Academic Support | 58,633,464 |
| Student Services | 37,251,927 |
| Institutional Support | 108,120,489 |
| Operation of Plant | 125,197,501 |
| Scholarships and Fellowships | 16,342,204 |
| Auxiliary Enterprises | 90,824,009 |
| Non-Operating Expenses | 24,679,352 |
| Total Expenditures | \$1,561,314,453 |

Note: Financial information for the Institute's affiliated organizations has not been included in the presentation above. The Institute relies upon its affiliates for support of sponsored programs, scholarship funding, capital investments and various Institute programs.



RESEARCH

Research Proposals and Awards for FY 2017:

| | Proposals | | Awards | |
|--------------------------|--------------|------------------------|--------------|----------------------|
| | Number | Amount | Number | Amount |
| College of Design | 221 | \$15,709,476 | 897 | \$10,957,439 |
| College of Computing | 205 | 165,510,843 | 143 | 24,678,480 |
| College of Engineering | 1,719 | 946,075,345 | 1,164 | 171,962,451 |
| Ivan Allen College | 64 | 16,161,039 | 33 | 7,073,463 |
| Scheller College of Bus. | 5 | 431,548 | 3 | 507,000 |
| College of Sciences | 531 | 292,600,408 | 354 | 57,833,488 |
| Research Centers | 316 | 75,939,823 | 309 | 40,390,490 |
| GT Research Institute | 569 | 822,260,761 | 804 | 377,046,684 |
| Institute Total | 3,630 | \$2,334,689,243 | 3,707 | \$690,449,496 |

Research Awards by Agency for FY 2017:

| Awarding Agency | Amount | Percent of Total |
|------------------------------|----------------------|------------------|
| U. S. Air Force | \$172,873,140 | 25.0% |
| U. S. Army | 58,402,283 | 8.5% |
| U. S. Navy | 39,606,095 | 5.7% |
| U. S. Department of Commerce | 6,178,082 | 0.9% |
| U. S. Department of Defense | 76,311,251 | 11.1% |
| U. S. Department of Energy | 13,696,082 | 2.0% |
| U. S. Department of HHS | 40,882,009 | 5.9% |
| NASA | 14,427,865 | 2.1% |
| National Science Foundation | 64,939,369 | 9.4% |
| Other Federal Agencies | 16,912,936 | 2.4% |
| Total Federal | \$504,229,113 | 73.0% |
| Colleges & Universities | 39,510,626 | 5.7% |
| Government Owned-Contractor | | |
| Operated Facilities | 7,692,126 | 1.1% |
| Industrial | 98,048,908 | 14.2% |
| Miscellaneous | 31,114,889 | 4.5% |
| State and Local Governments | 9,853,834 | 1.4% |
| Grand Total | \$690,449,496 | 100.00% |

ENTERPRISE INNOVATION INSTITUTE (EI²)

Create

Accelerate

Grow

The **Enterprise Innovation Institute (EI²)** is the Georgia Institute of Technology's economic development organization. Georgia Tech was founded to support Georgia's economic development and EI²'s focus — "*Create > Accelerate > Grow*" — is the continuance of that core mission. We achieve this through our extensive suite of programs and services and by leveraging Georgia Tech's broad resources and that of our economic development partners. EI²'s programs support **commercialization** to help bring faculty and student innovations to the market, accelerate **entrepreneurship** and technology startup creation, and help the **growth** of existing businesses, manufacturers, communities in Georgia, and beyond.

EI²'s key programs include the **Georgia Manufacturing Extension Partnership (GaMEP)**, the **Advanced Technology Development Center (ATDC)**, **VentureLab**, and the **Economic Development Lab**. See innovate.gatech.edu for a complete listing of programs and services.

EI²'s economic impact in fiscal year 2017:

- 26,000 jobs created or saved across the state.
- \$1.6 billion in government contracts for assisted companies.
- \$259 million in new sales for assisted manufacturers.
- \$117 million in new contracts for minority-owned companies.
- \$96 million in investment for technology startups in the ATDC incubator.
- \$9.7 million in new sales for assisted companies affected by foreign trade.
- 25 startups formed based on Georgia Tech research.



EI² manages a network of 11 Georgia Tech Regional Offices around the state to facilitate delivery of economic development services and to provide a local connection to Georgia Tech. To learn more about EI² or to take advantage of these outreach opportunities please visit: www.innovate.gatech.edu

STAFF AND FACULTY PROFILES

Staff Profile

Total Full-Time Employee Profile:

| | |
|-------------------------|--------------|
| Executive Management | 379 |
| Instruction | 1,115 |
| Management/Professional | 893 |
| Support Services | 4,297 |
| Technical Services | 849 |
| Total | 7,533 |



Faculty Profile*

by FT/PT Status:

| | | |
|--------------|--------------|----------------|
| Full-Time | 1,115 | 86.77% |
| Part-Time | 170 | 13.23% |
| Total | 1,285 | 100.00% |

by Gender:

| | | |
|--------------|--------------|----------------|
| Male | 930 | 72.37% |
| Female | 355 | 27.63% |
| Total | 1,285 | 100.00% |

*All instructional faculty, including tenured and non-tenure track.



CREATING THE NEXT®



Office of Institutional Research and Planning

Georgia Institute of Technology

Atlanta, Georgia 30332-0530

(404) 894-3311

www.irp.gatech.edu

A Unit of the University System of Georgia

©Copyright 2018