



Georgia Institute of Technology

2018 Mini Fact Book



Office of Institutional Research and Planning

Georgia Institute of Technology

Atlanta, Georgia 30332-0530

Phone: (404) 894-3311

www.irp.gatech.edu

Cover and interior photos courtesy of
Georgia Tech Institute Communications

Georgia Tech is an equal employment/education opportunity institution.



A Unit of the University System of Georgia

©Copyright 2019

Quantity 1,500

TABLE OF CONTENTS

Vision/Mission Statements.....	4
Accreditation.....	5
National Rankings.....	6
Georgia Tech Leadership	7
Admissions ¹ , Financial Aid.....	8
Cost of Attendance	9
Retention and Graduation Rates	10
Enrollment ¹	10-13
Degrees Offered	14-16
Degrees Conferred	17
Alumni	18
Career Discovery & Development and Study Abroad.....	19
Housing, Library, Space.....	20
Institute Finances	21
Research.....	22
Enterprise Innovation Institute.....	23
Faculty and Staff Profiles ¹	24

¹Fall 2018 data is as of the census date.

Vision

Georgia Tech will define the technological research university of the twenty-first century. As a result, we will be leaders in influencing major technological, social, and policy decisions that address critical global challenges. "What does Georgia Tech think?" will be a common question in research, business, the media, and government.

Mission

Technological change is fundamental to the advancement of the human condition. The Georgia Tech community—students, staff, faculty, and alumni—will realize our motto of "Progress and Service" through effectiveness and innovation in teaching and learning, our research advances, and entrepreneurship in all sectors of society. We will be leaders in improving the human condition in Georgia, the United States, and around the globe.



ACCREDITATION

The Georgia Institute of Technology is accredited by the Southern Association of Colleges and Schools Commission on Colleges to award baccalaureate, masters, and doctoral degrees. Contact the Southern Association of Colleges and Schools Commission on Colleges at:

Southern Association of Colleges and Schools
Commission on Colleges
1866 Southern Lane
Decatur, Georgia 30033-4097
Telephone number 404-679-4500
www.sacscoc.org

for questions about the accreditation of the Georgia Institute of Technology. In addition, many Institute programs are specifically accredited by appropriate professional certifying agencies.

Professional Accreditations:

College of Design

American Council for Construction Education
National Architectural Accrediting Board
International Facility Management Association (IFMA) Foundation
Planning Accreditation Board
National Association of Schools in Art and Design

College of Computing

Computing Accreditation Commission of ABET

College of Engineering

Commission on Accreditation of Medical Physics Educational Programs
Engineering Accreditation Commission of ABET

College of Sciences

American Chemical Society
Human Factors and Ergonomics Society

Scheller College of Business

Association to Advance Collegiate Schools of Business International

Georgia Tech Counseling Center

American Psychology Association (APA)
International Association of Counseling Services (IACS)

Georgia Tech Language Institute

Commission on English Language Program Accreditation (CEA)

Georgia Tech Police Department

Commission on Accreditation for Law Enforcement Agencies (CALEA)

NATIONAL RANKINGS

Georgia Tech's undergraduate program received a ranking of 8th among public universities and 35th overall according to the 2019 edition of *U.S. News & World Report*.

Georgia Tech's College of Engineering ranked 8th among the top graduate schools in the nation according to the 2019 edition of *U.S. News & World Report*.

Georgia Tech's Scheller College of Business received a ranking of 28th overall among graduate business schools in the 2019 edition of *U.S. News & World Report*.

Specific top ten graduate program rankings in the 2019 edition of *U.S. News & World Report* include:

- 1st in Industrial/Manufacturing/Systems Engineering
- 2nd in Bioengineering/Biomedical Engineering
- 2nd in Civil Engineering
- 2nd in Discrete Math and Combinatorics
- 2nd in Information & Technology Management
- 4th in Aerospace/Aeronautical/Astronautical Engineering
- 4th in Computer Engineering
- 5th in Electrical/Electronic/Communications Engineering
- 5th in Environmental/Environmental Health Engineering
- 5th in Mechanical Engineering
- 7th in Artificial Intelligence
- 7th in Chemical Engineering
- 7th in Materials Engineering
- 7th in Production/Operations
- 8th in Computer Science
- 9th in Nuclear Engineering



GEORGIA TECH LEADERSHIP
 (* denotes President's Cabinet)

President *	G. P. "Bud" Peterson
Provost and Executive Vice President for Academic Affairs *	Rafael L. Bras
Interim Executive Vice President for Administration and Finance *	James Fortner
Executive Vice President for Research *	Chaouki T. Abdallah
Vice President for Development *	Barrett H. Carson
Vice Provost for Graduate Education & Faculty Development *	Bonnie Ferri
Associate Vice President/Chief of Staff *	Lynn M. Durham
Vice President for Institute Diversity *	Archie W. Ervin
Interim Vice President, Ethics, Compliance and Legal Affairs *	Aisha Oliver-Staley
Vice Provost for Undergraduate Education *	Colin Potts
Vice President of Student Life/Dean of Students *	John M. Stein
Vice President, Government and Community Relations	Dene H. Sheheane
Interim Vice President, Institute Communications *	Dene H. Sheheane
Vice President and Executive Director, Enterprise Innovation Institute	Christopher Downing
Dean, Professional Education	Nelson C. Baker
Dean, College of Design	Steven P. French
Dean, College of Computing	Zvi Galil
Dean, College of Engineering	Steven McLaughlin
Dean, Ivan Allen College of Liberal Arts	Jacqueline J. Royster
Dean, Scheller College of Business	Maryam Alavi
Interim Dean, College of Sciences	David Collard
Dean, Libraries	Catherine Murray-Rust
Interim Senior Vice President and Director, GTRI *	Lora Weiss
Interim Senior Vice President, Administration	Mark Demyanek
Vice Provost, Enrollment Services	Paul Kohn
Vice Provost for International Initiatives	Yves Berthelot
Director of the Athletic Association	Todd Stansbury
President and Chief Executive Officer, Georgia Tech Alumni Association	Joseph P. Irwin
President, Georgia Tech Foundation	Al Trujillo

ADMISSIONS

Admissions, Fall 2018

	Applied	Accepted	Enrolled
Freshman	35,611	8,037	3,136
Transfer	2,068	606	539
Graduate	23,920	8,888	5,770



Cumulative Average Test Scores* for Fall 2018 Freshman Cohort:

	Verbal	Math	Composite
SAT	699	727	1426
ACT	32	32	32

*Prior year Fact Books reported the average for re-centered SAT scores which included converted ACT scores for those students who opted to take the ACT instead of the SAT.



FINANCIAL AID

Georgia Tech Awarded Student Aid, FY 2017-2018

	Number of Awards	Amount of Awards
Federal Funds	15,405	\$99,441,573
State Funds	9,745	71,138,076
Institutional Scholarships/Loans	5,243	49,279,021
Total GT Awarded Aid	30,393	\$219,858,670
Total Outside Awards	2,717	\$17,667,441
Total Awards	33,110	\$237,526,111

COST OF ATTENDANCE

Tuition and Fees, FY 2019

	Resident	Non-Resident
Undergraduate	\$12,424	\$33,020
Graduate	\$15,804	\$30,584
MBA Program	\$31,248	\$42,196

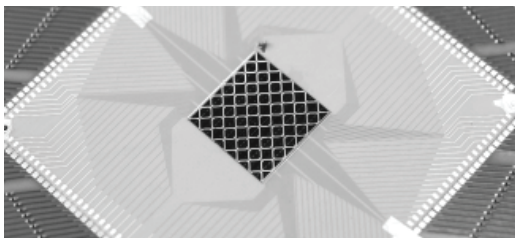
Breakdown of Other Mandatory Fees (included in above) for Undergraduate Georgia Residents:

Recreation-Facility	\$ 108
Student Activities	246
Student Athletic	254
Student Health	336
Transportation	170
Technology	214
USG Special Institutional Fee	1,088
Total	\$ 2,416

Estimated Elective Charges:

Dormitory Room Rent	\$ 6,850
Board	5,034
Miscellaneous (books, supplies, personal)	4,000
Average Loan Costs	60

Total Resident Freshman Costs: \$ 28,368



RETENTION RATES

Retention Rates for Entering Freshmen

Entering Class Summer/Fall	Retained After 1 year	Retained After 2 years
2009	94%	90%
2010	95%	92%
2011	95%	91%
2012	96%	92%
2013	96%	94%
2014	97%	94%
2015	97%	95%
2016	97%	94%
2017	97%	

*Note: Cohorts include students beginning Summer or Fall who are full-time for Fall. Retention is defined as being enrolled or having graduated.

GRADUATION RATES

Graduation Rates for Entering Freshmen

Entering Class Summer/Fall	Graduated by		
	4th year	5th year	6th year
2011	39%	80%	85%
2012	40%	82%	87%
2013	46%	85%	
2014	46%		

*Note: The six year graduation rate is the official rate according to the IPEDS Graduation Rate Survey definition. Cohorts include students beginning Summer or Fall who are full-time for Fall.



ENROLLMENT

Undergraduate Enrollment by Residency - Fall 2018

	Total	Pct
■ Georgia Resident	9,851	61%
■ Non-Resident	6,196	39%
Total	16,047	100%



ENROLLMENT

Enrollment Diversity - Fall Semester 2018

	Undergraduate	Graduate	Total	Percent
Amer. Indian/Alaskan	*	7	12	0.04%
Asian	3,584	2,307	5,891	18.00%
Black/African Amer.	1,117	592	1,709	5.22%
Hawaiian/Pacific Isl.	*	5	9	0.03%
Hispanic/Latino	1,137	852	1,989	6.08%
International	1,523	6,274	7,797	23.83%
Two or More Races	620	370	990	3.03%
Unknown	522	53	575	1.76%
White	7,535	6,215	13,750	42.02%
Total	16,047	16,675	32,722	100.00%

Note: Includes International (Non U.S. Resident) Students. Some data redacted due to FERPA (Undergraduate < 10, Graduate < 5).

Male	9,931	12,804	22,735	69.48%
Female	6,116	3,871	9,987	30.52%
Total	16,047	16,675	32,722	100.00%



Enrollment by Class - Fall Semester 2018

Freshman	2,266
Sophomore	3,257
Junior	3,657
Senior	6,030
JEPHS**	550
Special Undergraduate	287
Total Undergraduate	16,047
Master's	13,102
Ph.D.	3,500
Special Graduate	73
Total Graduate	16,675
Total Institute	32,722

** JEPHS = Joint Enrollment Program for High School Students

ENROLLMENT

Enrollment by State of Residence - Top 20, Fall Semester 2018

State	Undergraduate	Graduate	Total
Georgia	9,851	2,550	12,401
California	284	1,058	1,342
Florida	621	550	1,171
Texas	273	618	891
New York	290	426	716
Virginia	277	397	674
New Jersey	333	270	603
North Carolina	296	253	549
Pennsylvania	261	247	508
Maryland	233	219	452
Massachusetts	174	231	405
Illinois	174	227	401
Tennessee	168	154	322
Ohio	125	165	290
Washington	54	226	280
South Carolina	114	145	259
Alabama	74	139	213
Colorado	71	126	197
Connecticut	107	81	188
Michigan	35	151	186

Enrollment by Country of Residence - Top 20, Fall Semester 2018

Country	Undergraduate	Graduate	Total
China	306	2,177	2,483
India	215	1,860	2,075
Korea, Republic of (South)	221	291	512
Canada	13	196	209
France	11	157	168
Taiwan	14	114	128
Brazil	60	46	106
Iran	5	95	100
Turkey	32	67	99
Saudi Arabia	38	58	96
Pakistan	11	84	95
Mexico	21	60	81
Singapore	20	57	77
Vietnam	23	51	74
Colombia	20	49	69
Nigeria	24	45	69
Egypt	7	45	52
United Kingdom	21	30	51
Spain	33	16	49
Australia	5	43	48

- Students at Georgia Tech represent 138 different countries.
- Total student population with country of residence not in U.S. is 7,797

ENROLLMENT

Enrollment by College, 10 Year History

College	2008	2018
College of Computing		
Bachelor's (or Undergraduate)	894	2,395
Master's	470	8,376
Doctorate	305	334
Total College of Computing	1,669	11,105
College of Design		
Bachelor's (or Undergraduate)	690	451
Master's	427	455
Doctorate	89	77
Total College of Design	1,206	983
College of Engineering		
Bachelor's (or Undergraduate)	7,507	8,781
Master's	1,651	3,121
Doctorate	1,921	2,244
Total College of Engineering	11,079	14,146
Ivan Allen College of Liberal Arts		
Bachelor's (or Undergraduate)	942	787
Master's	180	150
Doctorate	103	103
Total Ivan Allen College	1,225	1,040
Scheller College of Business		
Bachelor's (or Undergraduate)	1,347	1,205
Master's	456	830
Doctorate	48	52
Total Scheller College of Business	1,851	2,087
College of Sciences		
Bachelor's (or Undergraduate)	1,153	1,587
Master's	140	212
Doctorate	650	690
Total College of Sciences	1,943	2,489
No College Declared		
Bachelor's (or Undergraduate)	439	841
Master's	--	31
Total No College Declared	439	872
Institute Total	19,412	32,722

DEGREES OFFERED

•College of Computing•

Bachelor's

Computational Media
Computer Science

Master's

Analytics
Bioengineering
Computational Science & Engr.
Computer Science
Cybersecurity
Human-Computer Interaction

Ph.D.

Algorithms, Combinatorics &
Optimization
Bioengineering
Bioinformatics
Computational Science & Engr.
Computer Science
Human-Centered Computing
Machine Learning
Robotics

•College of Design•

Bachelor's

Architecture
Industrial Design
Music Technology

Master's

Architecture
Architecture & City and Regional
Planning
Building Construction & Facility
Management
City & Regional Planning
City & Regional Planning &
Civil Engineering
City & Regional Planning & Law
City & Regional Planning &
Public Policy
Geographic Information Science
& Technology
Human-Computer Interaction
Industrial Design

Music Technology
Real Estate Development
Urban Design

Ph.D.

Architecture
Building Construction
City & Regional Planning
Music Technology

•College of Engineering•

Bachelor's

Aerospace Engineering
Biomedical Engineering
Chemical & Biomolecular Engr.
Civil Engineering
Computer Engineering
Electrical Engineering
Environmental Engineering
Industrial Engineering
Materials Science & Engr.
Mechanical Engineering
Nuclear & Radiological Engr.

Master's

Aerospace Engineering
Analytics
Applied Systems Engineering
(Professional)
Bioengineering
Biomedical Innovation &
Development
Chemical & Biomolecular Engr.
Chemical Engineering
Civil Engineering
Computational Science & Engr.
Cybersecurity
Electrical & Computer Engr.
Engineering Sci. & Mechanics
Environmental Engineering
Health Systems
Industrial Engineering
International Logistics
Manufacturing Leadership
Materials Science & Engr.
Mechanical Engineering

DEGREES OFFERED

Medical Physics
 Nuclear Engineering
 Occupational Safety and Health
 Operations Research
 Quantitative & Computational
 Finance
 Statistics
 Supply Chain Engineering

Ph.D.

Aerospace Engineering
 Algorithms, Combinatorics &
 Optimization
 Bioengineering
 Bioinformatics
 Biomedical Engineering
 Chemical Engineering
 Civil Engineering
 Electrical & Computer Engr.
 Engineering Science &
 Mechanics
 Environmental Engineering
 Industrial Engineering
 Machine Learning
 Mechanical Engineering
 Nuclear Engineering
 Ocean Science and Engineering
 Operations Research
 Robotics

•Scheller College of Business•

Bachelor's

Business Administration

Master's

Analytics
 Business Administration
 Global Business
 Management
 Management of Technology
 Manufacturing Leadership
 Occupational Safety and Health
 Quantitative & Computational
 Finance

Ph.D.

Management

•Ivan Allen College of Liberal Arts•

Bachelor's

Applied Languages &
 Intercultural Studies
 Computational Media
 Computational Media &
 Digital Media
 Economics
 Economics & International
 Affairs
 Global Economics & Modern
 Languages
 History, Technology, & Society
 International Affairs
 International Affairs & Modern
 Languages
 Literature, Media, &
 Communication
 Literature, Media, and
 Communication & Digital
 Media
 Public Policy

Master's

Applied Languages &
 Intercultural Studies
 Cybersecurity
 Digital Media
 Economics
 History & Sociology of
 Technology & Science
 Human-Computer Interaction
 International Affairs
 Public Policy

Ph.D.

Digital Media
 Economics
 History & Sociology of
 Technology & Science
 International Affairs, Science
 & Technology
 Public Policy

DEGREES OFFERED

•College of Sciences•

Bachelor's

Applied Physics
Biochemistry
Biology
Chemistry
Earth & Atmospheric Sciences
Mathematics
Neuroscience
Physics
Psychology

Master's

Bioinformatics
Biology
Biomedical Engineering
Chemistry
Computational Science & Engr.
Earth & Atmospheric Sciences
Human-Computer Interaction

Mathematics
Physics
Psychology
Quantitative & Computational
Finance
Statistics

Ph.D.

Algorithms, Combinatorics,
& Optimization
Applied Physiology
Bioinformatics
Biology
Chemistry
Earth & Atmospheric Sciences
Mathematics
Ocean Science and Engineering
Physics
Psychology
Quantitative BioSciences



DEGREES CONFERRED

Degrees Conferred by College, 10 Year History

Bachelor's

College	2008	2018
College of Computing	169	624
College of Design	168	73
College of Engineering	1,459	2,093
Ivan Allen College of Liberal Arts	195	127
Scheller College of Business	340	348
College of Sciences	252	251
Total	2,583	3,516

Master's

College	2008	2018
College of Computing	184	1,048
College of Design	104	218
College of Engineering	820	1,175
Ivan Allen College of Liberal Arts	86	68
Scheller College of Business	130	380
College of Sciences	105	153
Total	1,429	3,042

Ph.D.

College	2008	2018
College of Computing	32	41
College of Design	2	14
College of Engineering	327	345
Ivan Allen College of Liberal Arts	14	17
Scheller College of Business	11	5
College of Sciences	81	108
Total	467	530

Institute

	2008	2018
Institute Total	4,479	7,088

ALUMNI

Top Countries of Residence

United States of America	143,840
China	1,523
India	1,504
France	1,311
South Korea	773
Germany	423
Canada	290
Taiwan	273
Singapore	249
United Kingdom	189



Top States of Residence

Georgia	66,216
California	9,422
Florida	9,245
Texas	7,196
North Carolina	5,164
Virginia	4,661
South Carolina	3,828
Tennessee	3,340
Alabama	3,007
New York	2,692



Top Employers

IBM Corporation	1,031
Delta Air Lines, Inc.	985
Southern Company	955
Lockheed Martin	915
AT&T Inc.	897
General Electric Company	700
The Coca-Cola Company	474
Intel Corporation	444
Boeing Company	436
The Home Depot	430

CAREER DISCOVERY & DEVELOPMENT

Top Interviewing Companies, Fiscal Year 2018

Microsoft	Accenture
ExxonMobil	Ernst & Young
Bloomberg	Applied Predictive
Capital One	Technologies
SunTrust Bank	Pinnacle Art

Average Reported Starting Annual Salaries by College, Academic Year 2017-2018

College	Bachelor's
Computing	\$99,000
Design	\$61,000
Engineering	\$70,000
Ivan Allen	\$50,000
Business	\$65,000
Sciences	\$50,000

EXPERIENTIAL LEARNING PROGRAMS, FY 2017-2018

Participants FY 2017-18

Undergraduate Cooperative Program	1,328
Professional Internship Program	1,441
Graduate Cooperative Program	1,191
Co-op Degrees Earned	352

INTERNATIONAL EDUCATION

Georgia Tech Students Abroad by Year 2015-2016 through 2017-2018*

Year	Number
2015-2016	2,111
2016-2017	2,215
2017-2018	2,377

*Year is equal to Fall term to Summer term of the following year.

HOUSING

Student Housing Occupancy, Fall 2018:

Total Single Student Housing	
Capacity	9,975
Occupancy	9,930
Married Student Housing	
Capacity	222
Occupancy	222
Total Student Housing	
Capacity	10,197
Occupancy	10,152
Percent Occupied	99.56%

LIBRARY

The Georgia Tech Library Collections & Usage for Fiscal Year 2018:

Number of Titles	1,906,354
Items Circulated	29,313
SmartTech Holdings	5,544
SmartTech Unique Users	257,000
Electronic Books	1,257,098
Electronic Journals	215,344
Articles and Books Downloaded (estimated)	3,466,207
Classes taught by Library Faculty & Staff	443
Library Attendance	1,383,082

SPACE

Square Footage by Functional Area, Fall 2018:

Area	Gross Square Footage
Academic Instruction and Research	5,663,265
Academic Support	478,034
Athletic Association	912,093
Campus Support	880,858
GT Research Institute	1,033,160
Parking Decks	2,227,201
Residential	3,326,503
Student Support	734,732
Other	186,267
Institute Total	15,442,113

- Georgia Tech has 254 buildings

INSTITUTE FINANCES

Revenues - FY 2018 Actual

State Appropriations	\$291,283,120
Student Tuition and Fees	369,856,163
Gifts, Grants and Contracts	891,181,803
Sales, Services & Other	196,083,326
Total Revenue	\$1,748,404,412



Expenditures by Major Program Areas FY 2018 Actual

Major Program Areas:

Instruction	\$312,384,484
Research	786,859,532
Public Service	71,586,384
Academic Support	60,564,620
Student Services	37,504,917
Institutional Support	108,064,848
Operation of Plant	171,558,795
Scholarships and Fellowships	17,994,648
Auxiliary Enterprises	92,790,935
Non-Operating Expenses	24,133,749
Total Expenditures	\$1,683,442,912

Note: Financial information for the Institute's affiliated organizations has not been included in the presentation above. The Institute relies upon its affiliates for support of sponsored programs, scholarship funding, capital investments and various Institute programs.



RESEARCH

Research Proposals and Awards for FY 2018:

	Proposals		Awards	
	Number	Amount	Number	Amount
College of Design	210	\$17,070,352	862	\$8,548,585
College of Computing	205	163,505,702	163	27,630,568
College of Engineering	1,734	621,013,116	1,249	209,571,701
Ivan Allen College	49	16,592,146	40	4,981,248
Scheller College of Bus.	4	807,200	4	400,000
College of Sciences	532	232,012,321	352	62,873,412
Research Centers	265	61,139,064	271	40,539,747
GT Research Institute	559	787,274,321	929	497,070,286
Institute Total	3,558	\$1,899,414,222	3,870	\$851,615,547

Research Awards by Agency for FY 2018:

Awarding Agency	Amount	Percent of Total
U. S. Air Force	\$218,530,069	25.7%
U. S. Army	63,639,676	7.5%
U. S. Navy	57,999,266	6.8%
U. S. Department of Commerce	5,412,170	0.6%
U. S. Department of Defense	112,445,836	13.2%
U. S. Department of Energy	12,289,965	1.4%
U. S. Department of HHS	44,719,815	5.3%
NASA	10,639,475	1.2%
National Science Foundation	73,255,511	8.6%
Other Federal Agencies	16,038,252	1.9%
Total Federal	\$614,970,035	72.2%
Colleges & Universities	39,991,676	4.7%
Government Owned-Contractor Operated Facilities	6,381,356	0.7%
Industrial	124,566,721	14.6%
Miscellaneous	49,856,933	5.9%
State and Local Governments	15,848,826	1.9%
Grand Total	\$851,615,547	100.0%

ENTERPRISE INNOVATION INSTITUTE (EI²)

Create

Accelerate

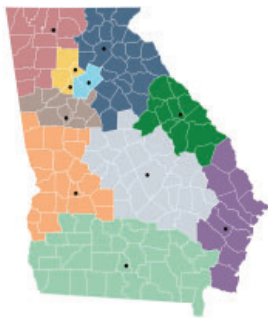
Grow

The **Enterprise Innovation Institute (EI²)** is the Georgia Institute of Technology's economic development organization. Georgia Tech was founded to support Georgia's economic development and EI²'s focus — "*Create > Accelerate > Grow*" — is the continuance of that core mission. We achieve this through our extensive suite of programs and services led by 150+ extension professionals and by leveraging Georgia Tech's broad resources and that of our economic development partners. EI²'s programs support **commercialization** to help bring faculty and student innovations to the market, accelerate **entrepreneurship** and technology startup creation, and help the **growth** of existing businesses, manufacturers, communities in Georgia, and beyond.

EI²'s key programs include the **Georgia Manufacturing Extension Partnership (GaMEP)**, the **Advanced Technology Development Center (ATDC)**, **VentureLab**, and the **Economic Development Lab**. See innovate.gatech.edu for a complete listing of programs and services.

EI²'s economic impact in fiscal year 2018:

- 25+ startups formed from Georgia Tech research.
- 170+ startups in ATDC incubator.
- \$468 million in capital activity for ATDC companies.
- \$509 million in new sales for assisted manufacturers.
- 10,700+ industry and businesses served across the state.
- 70+ economic development research projects in 16 countries.



EI² manages a network of 11 Georgia Tech Regional Offices around the state to facilitate delivery of economic development services and to provide a local connection to Georgia Tech. To learn more about EI² or to take advantage of these outreach opportunities please visit:

www.innovate.gatech.edu

STAFF AND FACULTY PROFILES

Staff Profile

Total Full-Time Employee Profile:

Executive Management	380
Instructional Faculty	997
Research Faculty	289
Management/Professional	884
Support Services	4,491
Technical Services	879
Total	7,750



Faculty Profile*

by FT/PT Status:

Full-Time	1,116	86.78%
Part-Time	170	13.22%
Total	1,286	100.00%

by Gender:

Male	935	72.71%
Female	349	27.14%
Other	2	0.15%
Total	1,286	100.00%

*All instructional faculty, including tenured, tenure-track and non-tenure track.

